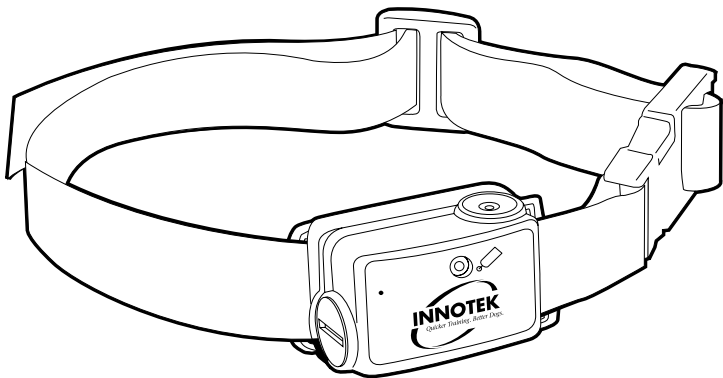


# **INNOTEK®**

# **Spray Bark Control**

## **Operating Guide**

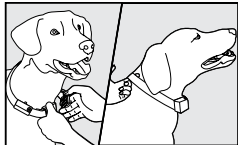
**Please read this entire guide before beginning.**



# Quick Start Guide

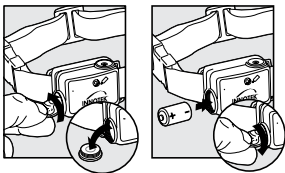
## Step 1 Adjust the collar

**Proper Fit:** The collar fit should be snug, yet loose enough to allow one finger to fit between the strap and the dog's neck. Fit is important because a loose collar may cause inconsistent performance. Trim any excess strap length.



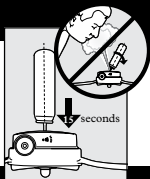
## Step 2 Power Up

The collar should be off the dog for this step. Insert battery, positive (+) side out.



## Step 3 Fill the collar

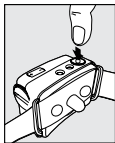
The collar should be off the dog for this step. Be certain the collar is turned OFF. Hold the Lemon Spray can upright and press nozzle firmly into the Refill Port. Hold for 15 seconds and remove.



## Step 4 Using the collar

Press the On/Off button until the green LED illuminates; release the button. Put the collar on your dog, with the spray nozzle facing toward the dog's snout and fasten the strap. Allow your dog to wear the collar for several minutes then recheck the fit. You should notice a reduction in your dog's barking within the first couple of days that he wears the collar.

**Important: The Bark Control Collar should not be worn for more than 8 hours out of every 24 hour period.**



## Register Your Product:

Your product can be registered on our website at [www.innotek.net](http://www.innotek.net).

### IMPORTANT ADVICE

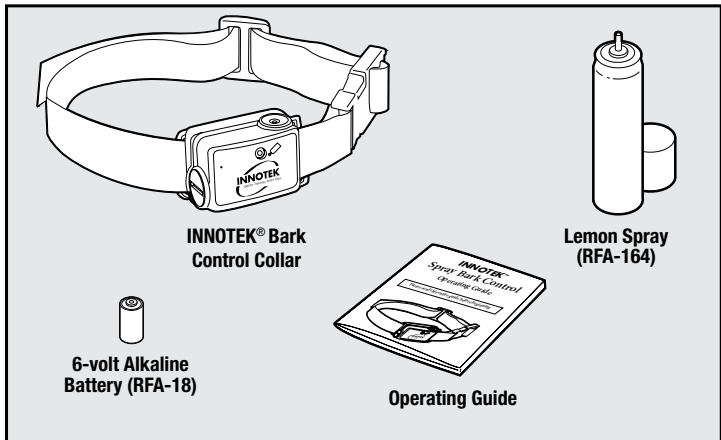
1. Read the complete manual and follow all directions. If you have any questions, please call 1-800-826-5527.
2. This device is intended for use only on dogs. Never attempt to use it for any purpose not described in this manual.
3. An electronic collar should only be used under close supervision by the dog's owner.  
KEEP OUT OF THE REACH OF CHILDREN
4. Never perform set-up procedures while the collar is on your dog.
5. Any collar worn for extended periods can cause a condition similar to bedsores, known as Pressure Necrosis. To reduce the possibility, you must do the following:
  - Never leave the collar on the dog for more than 8 consecutive hours.
  - Examine the dog's neck daily for any signs of a rash or a sore.
  - Supervise your dog closely during the first 2 days of training.
  - Check the fit to prevent excessive pressure; you should be able to insert one finger between the collar strap and your dog's skin.
  - Wash the dog's neck area and the probe of the collar weekly with a wash cloth.
  - If the condition persists beyond 24 hours, see your veterinarian.
6. Do not attempt to dismantle or repair any components of this system; doing so will void the warranty in full. The computerized circuitry should be serviced only by an authorized expert.
7. This Product is designed for use with pets where training is desired. The specific temperament of your pet may not work with this Product. We recommend that you not use this Product if your pet is aggressive. If you are unsure whether this is appropriate for your pet please consult your veterinarian or certified trainer.

Proper use includes reviewing the entire Guide provided with your Product and any specific Caution statements.

# Table of Contents

Components.....	5
Features.....	5
How the INNOTEK® Spray Bark Control Collar Works.....	6
Key Definitions .....	6
Fit the Bark Control Collar .....	7
Ensure a Proper Spray Pattern.....	8
To Insert and Remove the Battery.....	8
Modes of Operation .....	9
To Fill and Refill the Lemon Spray.....	9
What to Expect During Use of the Bark Control Collar .....	10
Regular Maintenance .....	10
Accessories .....	11
Frequently Asked Questions .....	11
Troubleshooting.....	12
Terms of Use and Limitation of Liability.....	13
Product Warranty.....	13

# Components



## Features

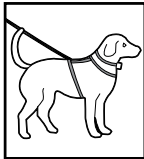
- Nano Technology—the smallest Spray Bark Control Collar available
- Patented Perfect Bark™ detection ensures your dog's bark is the only sound that will cause the correction
- Adjustable collar for neck sizes up to 28"
- For dogs of all sizes
- All-natural lemon scent is safe and effective
- Waterproof
- Good/Low battery indicator
- 40 sprays per refill
- Low spray indicator
- On/Off button

# How the INNOTEK® Spray Bark Control Collar Works

The INNOTEK® Spray Bark Control Collar effectively stops barking when it is worn. The Bark Control Collar has a unique patented sensor that provides the most reliable bark detection available. The Bark Control Collar uses both vibration and sound sensors (dual-detection) to discriminate each bark from other external noises. A burst of lemon-scented spray is emitted to deter barking only if both the vibration from vocal chords and the sound from the bark match the same criteria.

## Important:

- **DO NOT** attach a leash to the Bark Control Collar. You may put a separate non-metallic collar on your dog's neck and attach a leash. *Note: Be sure the extra collar does not interfere with the Sensor Probe.*
- Your dog may wear a harness for attaching a leash and/or tags while using the Bark Control Collar.
- Before playing with your dog, turn the unit off and remove the Bark Control Collar. The activity may cause your dog to bark, which could lead to him associating the play with the burst of spray.
- Never leave the Bark Control Collar on for more than 8 consecutive hours.



## Key Definitions

**Spray Nozzle:** Where the spray ejects when your dog's bark is detected.

**Sound Activated Sensor:** Detects the sound of your dog's bark.

**Refill Port:** Where the spray is refilled.

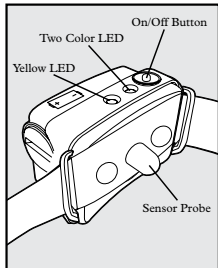
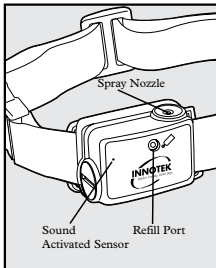
**Yellow LED:** Low spray indicator

**Two Color LED:** Shows good or low battery

**On/Off Button:** Turns the collar on and off, and resets the spray counter.

**Sensor Probe:** Detects the vibrations of your dog's bark.

*Note: The Sensor Probe is not adjustable.*

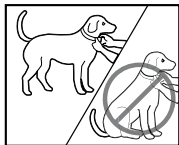


# Fit the Bark Control Collar

**Important:** The proper fit and placement of your Bark Control Collar is important for effective operation.

To assure a proper fit, please follow these steps:

1. Make sure that the Bark Control Collar is turned off.
2. Start with your dog standing comfortably.
3. Place the Bark Control Collar high on your dog's neck close to the ears.  
Center the Sensor Probe underneath your dog's neck, touching the skin.  
Make sure the INNOTEK® logo in the front of the unit is upright.



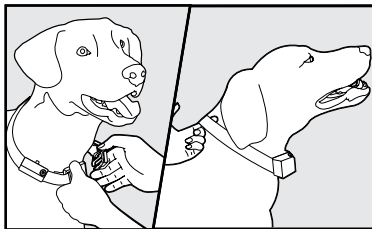
*Note: It is sometimes necessary to trim the hair around the Sensor Probe to make sure that contact is consistent.*

4. Check the tightness of the Bark Control Collar by inserting one finger between the collar and the back of the dog's neck.



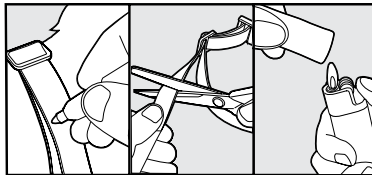
The fit should be snug but not constricting.

5. Allow your dog to wear the collar for several minutes, then recheck the fit. Check the fit again as your dog becomes more comfortable with the Bark Control Collar.



6. Trim the collar as follows:

- a. Mark the desired length of the collar with a pen. Allow for growth if your dog is young or grows a thick winter coat.
- b. Remove the Bark Control Collar from your dog and cut off excess.
- c. Before placing the Bark Control Collar back onto your dog, seal the edge of the cut collar by applying a flame along the frayed edge.

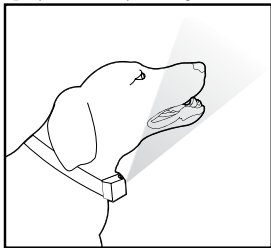


**Important:** The Bark Control Collar should not be worn for more than 8 hours out of every 24-hour period.

## Ensure a Proper Spray Pattern

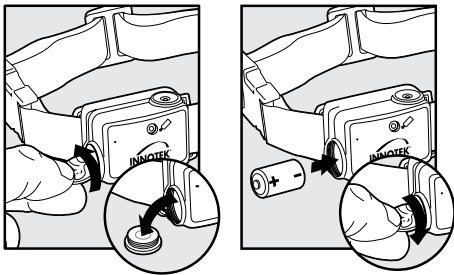
For the INNOTEK® Spray Bark Control Collar to perform properly, the nozzle must be positioned correctly and there must be a clear path from the Spray Nozzle to your dog's snout. Follow these steps:

1. Make sure the INNOTEK® logo on the front of the unit is upright and the Spray Nozzle is angled out and pointing up towards the dog's snout.
2. For long-haired dogs, it may be necessary to trim the neck hairs along the path of the spray. It is important that the spray reaches the dog's snout to be effective.



## To Insert and Remove the Battery

*Note: Do not install the battery while the Bark Control Collar is on your dog.*



A replacement INNOTEK® battery (RFA-18) can be found at many retailers. Contact the Customer Care Center at 1-800-826-5527.

## Battery Life

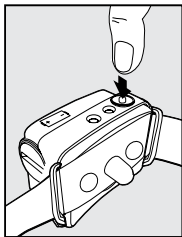
Average battery life is 2 to 4 months, depending on how often your dog barks. However, due to greater use during your dog's training, your first battery may not last as long as replacement batteries.



# Modes of Operation

- To activate the unit, press the On/Off Button until the Green LED Light comes on and release. The Green LED Light will flash once every 5 seconds.
- To turn the unit off, press the On/Off Button and hold until the Red LED Light flashes.

*Note: The Yellow LED Light will flash briefly before the Red LED Light appears. This indicates the reset sequence.*



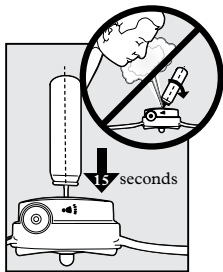
## Function and Response Table

Function	LED Light Response
Unit is on	Green LED Light flashes once every 5 seconds
Low battery condition	Red LED Light flashes 3 times every 5 seconds
Low spray warning	Yellow LED Light appears

## To Fill and Refill the Lemon Spray

- Remove the collar from your dog.
- Turn the unit off.
- Hold the Lemon Spray can upright and firmly press the nozzle down into the Refill Port. Hold for 15 seconds and remove. *Note: If spray leaks out, you may need to press harder to complete the seal.*
- Turn the unit on.

**Important:** To reset the Spray Counter, press the On/Off Button until the Yellow LED Light comes on, and release the button. The Green LED Light will resume to 1 flash every 5 seconds.



*Note: It is important that the On/Off Button be released immediately after the Yellow LED Light comes on or the unit will be turned off.*

# What to Expect During Use of the Bark Control Collar

**Important:** Do not leave your dog alone the first few times he wears the Bark Control Collar.

Place the Bark Control Collar properly on your dog and wait nearby until he barks. Most dogs will understand very quickly that the Bark Control Collar is disrupting their urge to bark and will relax and stop barking. Because the burst of Lemon Spray from the Bark Control Collar may be surprising or startling at first, some dogs may bark more at the initial correction.

On rare occasions, a dog may get into a bark-spray-bark-spray cycle. If this happens, reassure your dog with calm, soothing tones. As your dog relaxes, he will understand that if he becomes quiet, he will not receive any more spray bursts. The small minority of dogs that have this reaction should only have it the first time they wear the Bark Control Collar.

You should notice a reduction in your dog's barking within the first couple of days that he wears the Bark Control Collar. At this point, it is important to remember the learning process is still not complete. Dogs will "test" this new learning experience and will increase their attempts to bark. This usually occurs during the second week a dog wears the Bark Control Collar. If this does occur, remain consistent and do not alter your use of the Bark Control Collar. You must place the Bark Control Collar on your dog in every situation when you expect him to be quiet. If your dog is not wearing the Bark Control Collar, he may resume barking and his learning would suffer a setback.

---

## Regular Maintenance

- For comfort, safety, and effectiveness of this product, please ensure that you check the fit of your pet's collar frequently.
- The Bark Control Collar should not be worn for more than 8 hours out of every 24-hour period to prevent irritation. If any skin irritation is observed, discontinue the use of the collar for a few days. If the condition persists beyond 48 hours, see your veterinarian.
- The spray from the Bark Control Collar may stick to the hair under your dog's snout. Clean your dog's hair weekly with a washcloth and a mild hand soap. Rinse and dry your dog's neck thoroughly.
- If the spray accumulates on the Bark Control Collar, wipe the receiver clean with a damp cloth and dry thoroughly.

## Accessories

To purchase additional accessories for your INNOTEK® Bark Control Collar, contact the Customer Care Center at 1-800-826-5527.

Component	Part Number
Battery - one pack	RFA-18
Lemon Spray Canister (MSDS sheet available upon request)	RFA-164
Buckle	RFA-275
Replacement Collar	RFA-130

## Frequently Asked Questions

Will my dog stop barking completely?	<ul style="list-style-type: none"><li>• The Bark Control Collar effectively stops barking when it is worn. It should only be worn during periods of unwanted barking.</li></ul>
Will another dog's bark set off the Bark Control Collar?	<ul style="list-style-type: none"><li>• No.</li></ul>
Is the Bark Control Collar safe and humane?	<ul style="list-style-type: none"><li>• Yes. The Bark Control Collar is designed to get your dog's attention, not to punish him.</li></ul>
Will the Bark Control Collar work for my dog?	<ul style="list-style-type: none"><li>• The Bark Control Collar is safe and effective for all breeds and sizes of dogs.</li></ul>
Is the spray harmful?	<ul style="list-style-type: none"><li>• The lemon spray uses a lemon fragrance that dogs find unpleasant. It dissipates quickly and is safe for humans and pets.</li></ul>
Will this work with long-haired dogs?	<ul style="list-style-type: none"><li>• Yes. It may be necessary to trim the hair on your dog's neck so it does not block the spray from reaching his snout.</li></ul>
Does the spray need to hit my dog's nose?	<ul style="list-style-type: none"><li>• No. The spray is very fine and simply creates a mist in the region of the snout.</li></ul>

## Troubleshooting

**The Bark Control Collar does not spray.**

- Ensure that the battery is properly installed.
- Replace the battery.
- Refill the Lemon Spray.
- If the Bark Control Collar still does not spray, contact the Customer Care Center at 1-800-826-5527.

**My Bark Control Collar sprays, but my dog keeps barking (does not respond to the burst of spray).**

- Tighten the Bark Control Collar and make sure the Sensor Probe is centered on the front of the dog's neck.
- Check to make sure the Spray Nozzle points towards the dog's snout.
- Make sure your dog's hair does not block the spray. If so, trim the hair so the spray can reach the snout area.
- If your dog still does not respond, contact the Customer Care Center at 1-800-826-5527.

**When I try to refill the Lemon Spray, the spray leaks out around the Spray Nozzle.**

- Hold the Lemon Spray can upright. If it is held at an angle, it will not create a good seal.
- Press firmly on the Lemon Spray can to create a good seal.
- If the spray continues to leak, contact the Customer Care Center at 1-800-826-5527.

# Terms of Use and Limitation of Liability

## 1. Terms of Use

This Product is offered to you conditioned upon your acceptance without modification of the terms, conditions and notices contained herein. Usage of this Product implies acceptance of all such terms, conditions, and notices.

## 2. Proper Use

This Product is designed for use with pets where training is desired. The specific temperament of your pet may not work with this Product. We recommend that you not use this Product if your pet is aggressive. If you are unsure whether this is appropriate for your pet please consult your veterinarian or certified trainer.

Proper use includes reviewing the entire Guide provided with your Product and any specific Caution statements.

## 3. No Unlawful or Prohibited Use

This Product is designed for use with pets only. This pet training device is not intended to harm, injure or provoke. Using this Product in a way that is not intended could result in violation of Federal, State or local laws.

## 4. Limitation of Liability

In no event shall Radio Systems® Corporation be liable for any direct, indirect, punitive, incidental, special or consequential damages, or any damages whatsoever arising out of or connected with the use or misuse of this Product. Buyer assumes all risks and liability from the use of this Product.

## 5. Modification of Terms and Conditions

Radio Systems Corporation reserves the right to change the terms, conditions and notices under which this Product is offered.

---

## Product Warranty

Please register your product online at [www.innotek.net](http://www.innotek.net). All parts are covered under warranty for ten (10) years. Labor is covered for the first year of ownership. Thereafter, there is a minimum service charge for the repair or replacement of the product. Misuse, loss, damage by pet or improper use or handling is not covered. INNOTEK® will not pay for loss of time, inconvenience, loss of use of your product or any incidental or consequential damage. Warranty void if product resold.

Please contact the Customer Care Center at 1-800-826-5527, if you need service or for help in troubleshooting and, if needed, to arrange a repair or replacement for your product (a service charge may apply). Also, please visit our website at [www.innotek.net](http://www.innotek.net) for Frequently Asked Questions and Troubleshooting Tips.







Radio Systems Corporation  
10427 Electric Avenue  
Knoxville, TN 37932  
1-800-826-5527  
www.innotek.net  
400-947/1

© 2007, Radio Systems Corporation